

THIS DRAWING IS COPYRIGHT © ALL RIGHTS RESERVED. NO PART OF THIS DRAWING MAY BE REPRODUCED, STORED IN A RETRIEVAL SYSTEM OR TRANSMITTED IN ANY FORM OR BY ANY MEANS WITHOUT THE PRIOR WRITTEN PERMISSION FROM MCELLIGOTT CONSULTING ENGINEERS LIMITED.

**NOTES**

01. DO NOT SCALE. USE FIGURED DIMENSIONS ONLY.
02. THIS DRAWING IS TO BE READ IN CONJUNCTION WITH ALL OTHER RELEVANT ARCHITECTURAL AND ENGINEERING DRAWINGS.
03. FINAL LOCATION OF MINIPILLARS & DUCTS TO BE AGREED WITH ESB SUPERVISOR PRIOR TO INSTALLATION.
04. PROVIDE FOR ESB METER CABINET, INTERNAL METER & BRACKETS, SURGE PROTECTION & CABLE TO PUMPING STATION CONTROL PANEL FOR HOUSING SCHEMES FOR ALL INSTALLATION DETAILS.
05. REFER TO ESB PUBLICATION ELECTRICAL SERVICES GUIDE BOOK FOR HOUSING SCHEMES FOR ALL INSTALLATION DETAILS.
06. THIS DRAWING SHOULD BE READ IN CONJUNCTION WITH THE NATIONAL CODE OF PRACTICE FOR CUSTOMER INTERFACE ISSUED BY ESB.
07. THIS PROPOSAL IS SUBJECT TO APPROVAL FROM THE LOCAL AUTHORITY & PLANNING PERMISSION.
08. ALL PUBLIC LIGHTING COLUMNS MUST BE A MINIMUM OF 800mm AWAY FROM THE KERB EDGE.
09. ALL PUBLIC LIGHTING COLUMNS TO BE A MINIMUM OF 7M AWAY FROM ANY TREES.
10. WHERE ACCESS TO LIGHTING COLUMNS IS OBSTRUCTED BY PATHWAYS ETC A RAISE & LOWER TYPE COLUMN SHOULD BE USED.
11. THIS IS NOT AN APPROVED PUBLIC LIGHTING DESIGN DRAWING INFORMATION ONLY.
12. LIGHTS TO BE WIRED BACK TO LANDLORDS BOARD AND CONTROLLED BY PHOTOCELLS / TIME CLOCK VIA CONTACTOR

**LEGEND**

- 2 x 6sq NYCY CABLE LAID IN 100mm PVC DUCT TO ET211-2003. SINGLE WALL DUCTING, COLOUR RED TO BE USED MANUFACTURED FROM HIGH DENSITY POLYETHYLENE (H.D.P.E), 107mm EXTERNAL DIAMETER, HAVING A WALL THICKNESS OF 5mm. THIS DUCTING TO HAVE THE WORDS "STREET LIGHTING" STAMPED ON, IN TRENCH. ALL WORKS TO LOCAL AUTHORITY SPECIFICATION. THIS IS A CIRCUIT LAYOUT AND NOT INDICATIVE OF WHERE DUCTS ARE TO BE LAID.
- **COLUMN DETAILS:**  
HEIGHT : 5m  
BRACKET LENGTH : POST-TOP  
INCLINATION :  
COLUMN QUANTITY :
- **COLUMN DETAILS:**  
HEIGHT : 5m  
BRACKET LENGTH : POST-TOP  
INCLINATION :  
COLUMN QUANTITY :
- WALL MOUNTED LED WAYLIGHT

C	FOR INFORMATION	RT	TMC	TMC	17/02/2020
B	FOR INFORMATION	RT	TMC	TMC	13/02/2020
A	FOR INFORMATION	RT	TMC	TMC	13/02/2020
ISSUE	DESCRIPTION	DRN	ORIG	APP	DATE

**McElligott**  
CONSULTING ENGINEERS  
H2a Centrepoint Business Park, Oak Road, Dublin 12  
tel: +353 (0)1 424 3014 email: info@mcelligott.ie web: www.mcelligott.ie

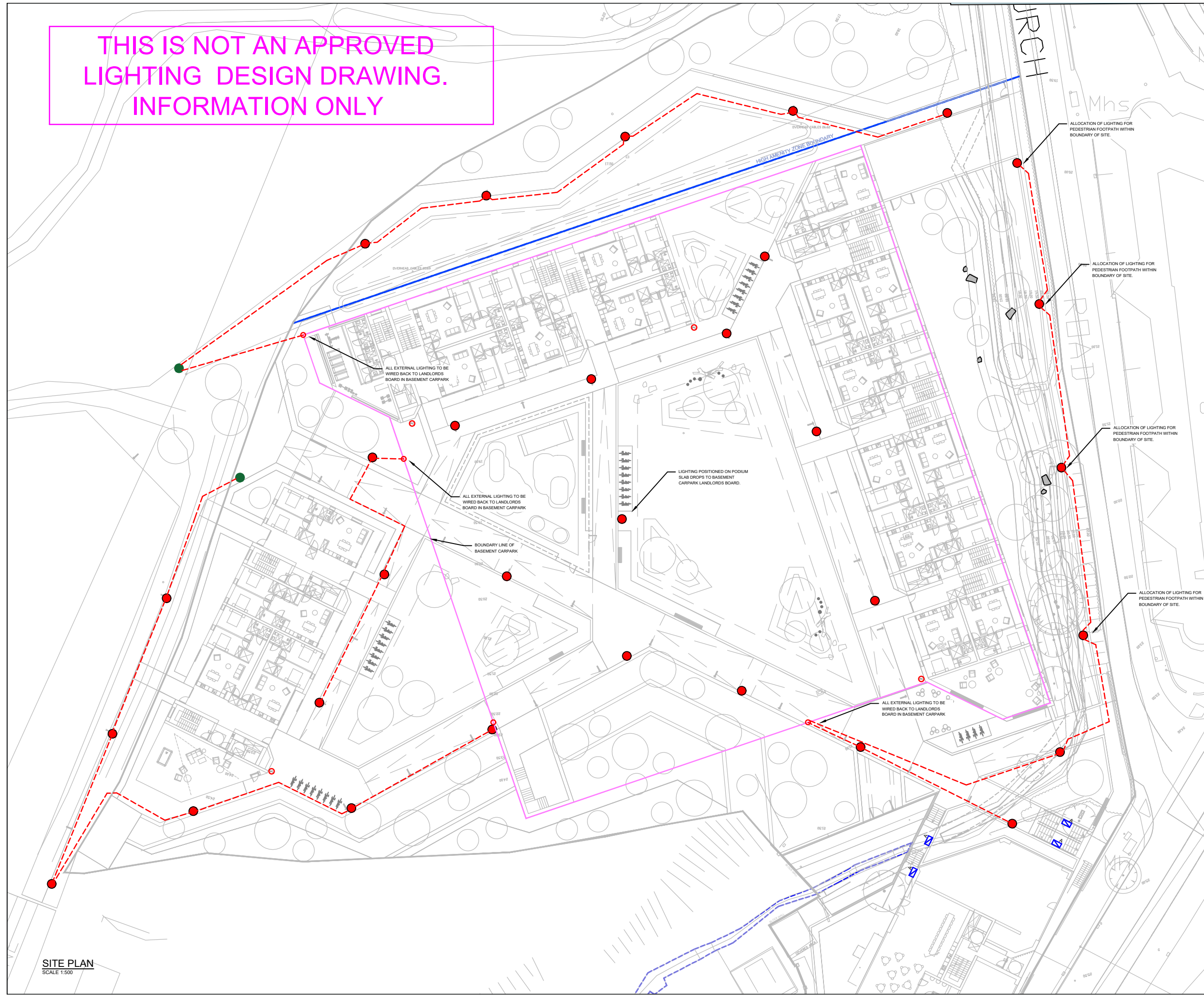
CLIENT  
**JACKO INVESTMENTS REDEVELOPMENT**

PROJECT  
**THE LORD MAYORS, MAIN STREET SWORDS**

TITLE  
**EXTERNAL LIGHTING LAYOUT**

SHEET	SCALE	PROJECT No.	DRAWING No.
A3	1:500	19040	E004

THIS IS NOT AN APPROVED LIGHTING DESIGN DRAWING. INFORMATION ONLY



**SITE PLAN**  
SCALE 1:500